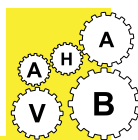


VAHAB



VAHAB

ENGINEERING SERVICE

General Catalog 2013

SUBRACKS

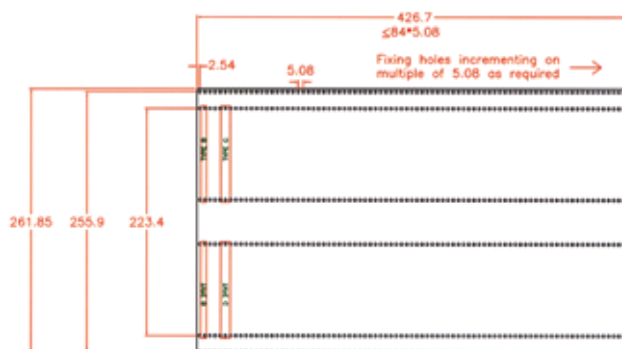
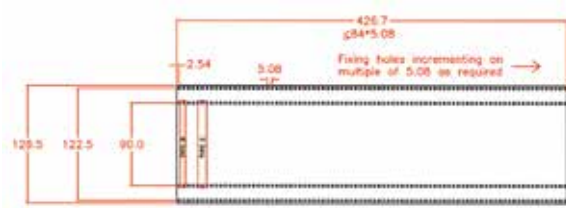
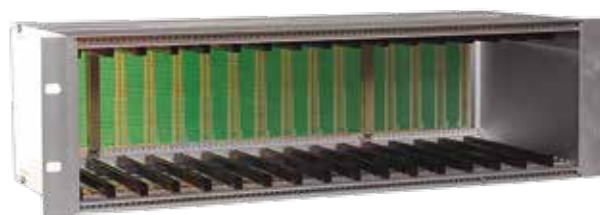


SUBRACKS

VAHAB Engineering Service

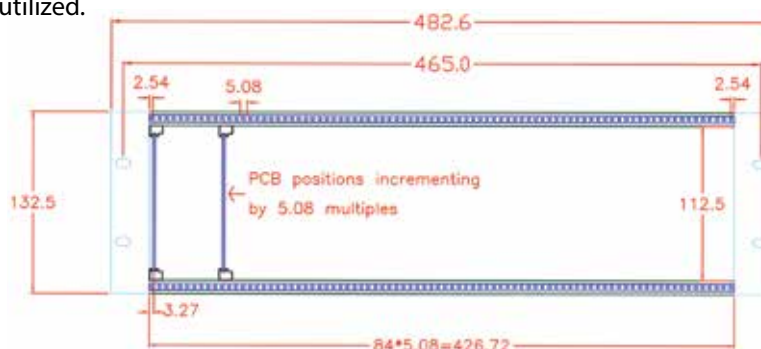
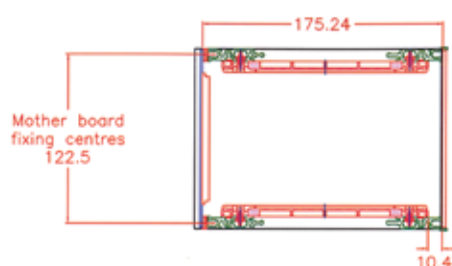
MOUNTING DIMENAION :

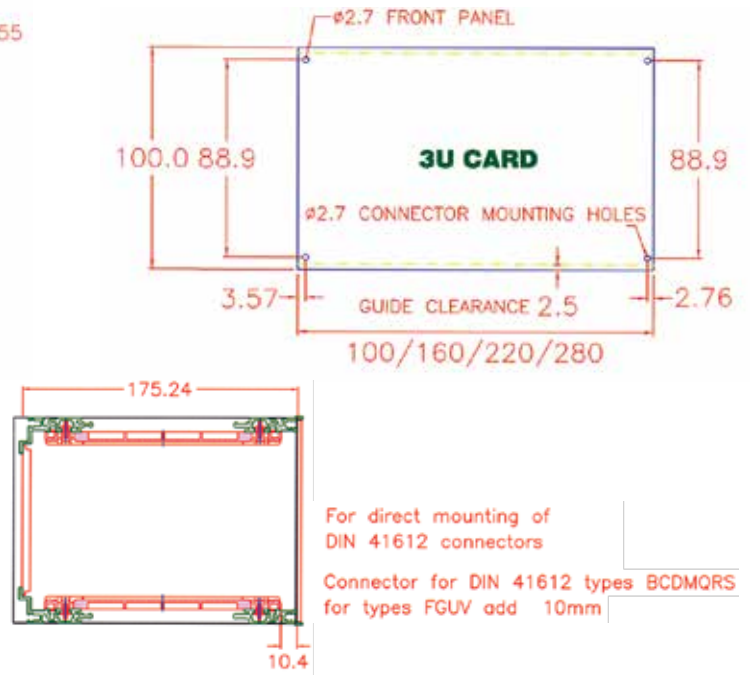
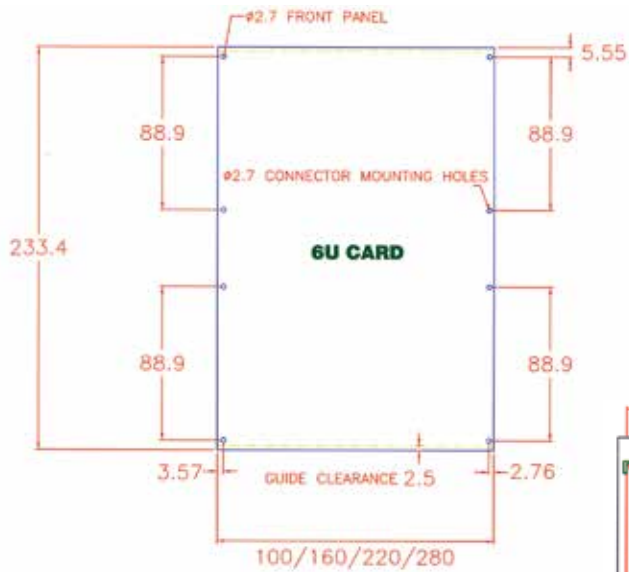
- The subrack system is fully compatible with IEC 297 section 3.
- All plug-in units are modular in concept and based on the first card position being 3.27 from the left hand datum line of working aperture; subsequent card positions are on multiples of 5.08 mm(1HP) from the first card position.
- To allow for a uniform working clearance between front panels the physical overall width of front panels is 0.4 mm less than the nominal HP x 5.08 mm dimensions quoted.
- The system is designed to accommodate indirect connector manufactured to the IEC 130-4 , DIN 41612, and VG 95324.



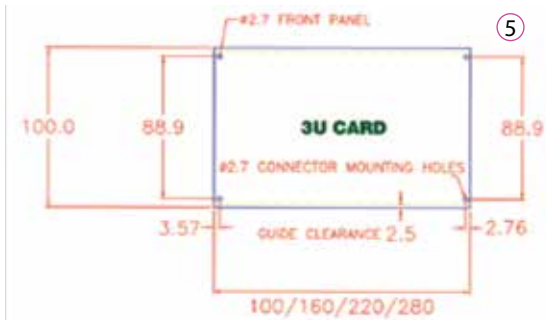
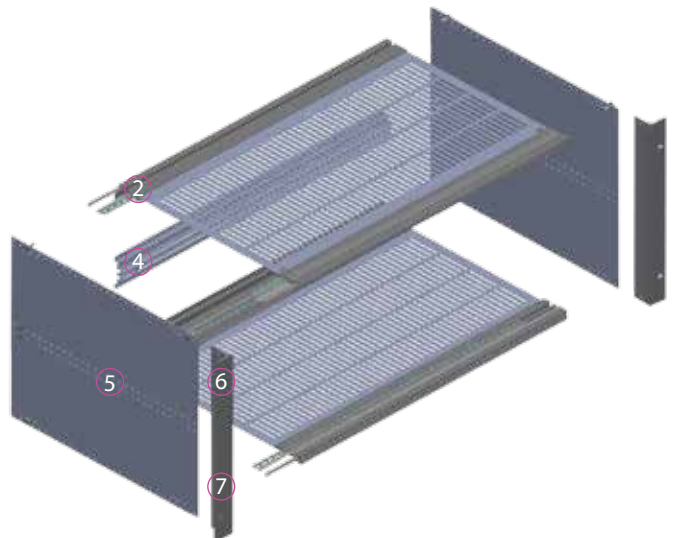
EUROCARDS- CRITICAL DIMENSIONS :

- As with the rest of the system the printed circuit boards sizes are standardized .
- All PCBs should be of euro card size and conform to the layout shown below.
- A 2.5 mm wide border is necessary at the top and bottom of printed circuit boards to allow clearance for guides and for mounting into plug-in unit guide rails.
- On the double height Eurocard, owing to the overall size and position of the connectors, it is recommended that when fitting components to the front panels the grid as laid out below is adopted. This will allow consistency between 3U and 6U height front panels if mixed configurations are utilized.





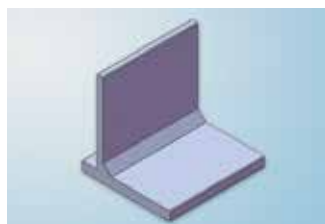
ROW	DESCRIPTION
1	Top Cover
2	Cross Rail
3	Cross Rail
4	Z R ail
5	S ide Panel
6	Mounting Flanges
7	Conver Trim



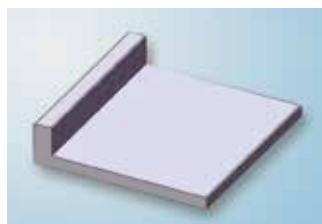
④



⑥



⑦



②



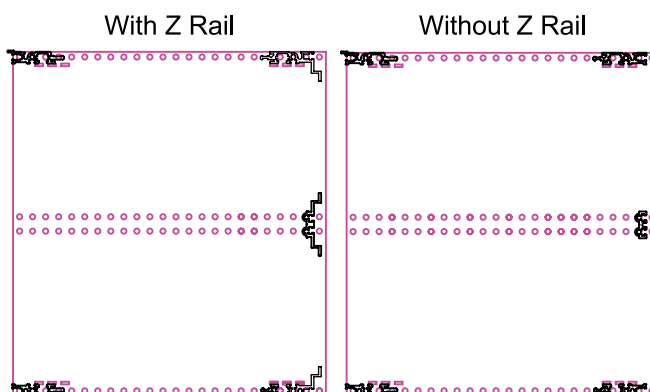


SUBRACKS

VAHAB Engineering Service

U	Installation Width(HP)	Installation Width(HP)	Without z rail Order No.	With z rail Order No.
2	42	100		
		160		
		220		
		280		
2	63	100		
		160		
		220		
		280		
2	84	100		
		160		
		220		
		280		
3	42	100		
		160		
		220		
		280		
3	63	100		
		160		
		220		
		280		
3	84	100		
		160		
		220		
		280		
4	42	100		
		160		
		220		
		280		
4	63	100		
		160		
		220		
		280		
4	84	100		
		160		
		220		
		280		
5	42	100		
		160		
		220		
		280		
5	63	100		
		160		
		220		
		280		
5	84	100		
		160		
		220		
		280		

U	Installation Width(HP)	Installation Width(HP)	Without z rail Order No.	With z rail Order No.
6	42	100		
		160		
		220		
		280		
6	63	100		
		160		
		220		
		280		
6	84	100		
		160		
		220		
		280		
7	42	100		
		160		
		220		
		280		
7	63	100		
		160		
		220		
		280		
7	84	100		
		160		
		220		
		280		
9	42	100		
		160		
		220		
		280		
9	63	100		
		160		
		220		
		280		
9	84	100		
		160		
		220		
		280		





Usable with	Order no.
42HP	
63HP	
84HP	
1m	

● **TE Strips**

For positioning the card guides in the cross rails in the 1 HP pitch pattern



Usable with	Order no.
42HP	
63HP	
84HP	

● **Tapped Strips**

With tapped holes M2.5 in 1 HP pitch



Usable with	Order no.
42HP	
63HP	
84HP	

● **Insulating Strips**

For fixing back plane on the card frame
With holes in 1 HP pitch



Usable for	Order no.
3U, 4U, 5U, 6U	4248.001

● **TE Strips**

Diecast aluminum, spray finished



Order no.

● **Card holder on front panel :**

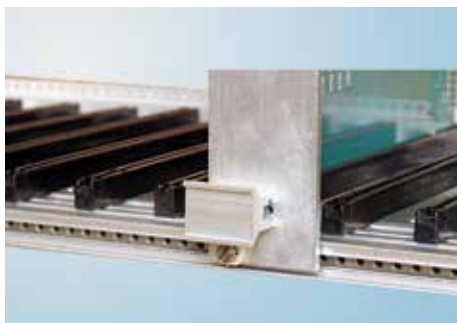
Material: polyamid

For securing PCBs to aluminum front panels.



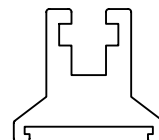
SUBRACKS

VAHAB Engineering Service



HP	order no.
3	
4	
5	
6	
7	
8	
10	

HP	order no.
12	
14	
21	
28	
42	
84	
1m	



- **Type I handle :**
Material: Aluminum
Surface finish: Anodised



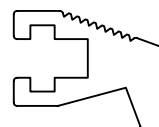
Order no.

- **Card Retainer :**
For retaining individual PCBs in place,
without front panels

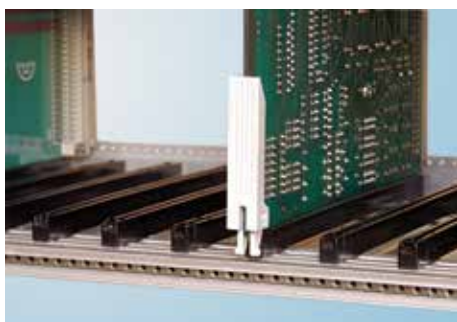


HP	order no.
3	
4	
5	
6	
7	
8	
10	

HP	order no.
12	
14	
21	
28	
42	
84	
1m	



- **Type II handle :**
Material: Aluminum
Surface finish: Anodised



Order no.

- **Card Ejector :**
For retaining individual PCBs inplace,
without front panels



- **Center pieces :**
Center pieces for 3-part card guides



	3U	6U
HP	Order	No.
3		
4		
5		
6		
7		
8		
9		
10		
11		
12		
13		
14		
20		
21		
40		
42		
60		
63		
84		

- **Partial front plates as covers only :**
covers only / natural anodized



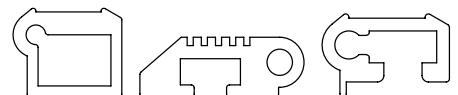
	3U	6U
HP	Order	No.
3		
4		
5		
6		
7		
8		
9		
10		
11		
12		
13		
14		
20		
21		

- **Partial front plates with handle and card retainr :**
Front plate 2.5 mm aluminum natural anodized

- **Front plate, hinged horizontally Vertically :**



	3U	6U
HP	Order	No.
3/42		
3/63		
3/84		
6/42		
3/63		
3/84		

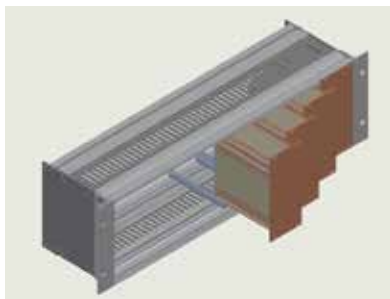




SUBRACKS

VAHAB Engineering Service

INSERT MODULE FOR SUBRACK :



Modules are suitable for accommodating PCBs on standard format and depth of 160/220 mm.

They can be installed in all subracks depending on the application in question, various versions are available.

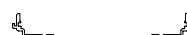


● Card depth 220 mm :

HP	order no 3U type I	order no 3U type II	order no 6U type II
6			
8			
10			
12			
14			
21			
28			
42			

● Card depth 160 mm :

HP	order no 3U type I	order no 3U type II	order no 6U type II
6			
8			
10			
12			
14			
21			
28			
42			



Extractor handle (type I and type II)

Suitable for flat front panels/ U-channel Front panels.

With removal Function.

Maybe used in combination with horizontal rails with 10 mm extension.

Supply includes:

Assembly parts.

Note:

With 3 U, only one extractor handle is required.

Type I extractor handle, 15 mm

Colour	Packs of	Model No. RP
Grey	1	3685.587
Black	1	3685.587

Type II extractor handle, 30 mm

Colour	Packs of	Model No. RP
Grey	1	3685.588
Black	1	3685.590

+ Accessories:

Identification strips for extractor handles,

Unit 2, No 100, Between Azmayesh bridge and shahr ara, Jalal Al Ahmad Broadway, Tehran - Iran

Tel/Fax: +98 21 88484368 & +98 21 88245870

Mob : +98 912 2264817 , +98 912 1463667

www.vahab-case.com | E-mail: vghahramani@yahoo.com