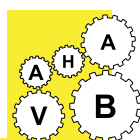


VAHAB



VAHAB

ENGINEERING SERVICE

General Catalog 2013

19" CABINETS



19" CABINETS

VAHAB Engineering Service

HD RACKS

HEAVY DUTY RACK

Increased stability compared with the classic HD rack for static loads of 1500 kg and more. Use of newly designed more stable extrusions and new. Heavier duty-corner piece.

MATERIAL

- extruded aluminium
- corner piece, die-cast aluminium
- covers, zinc plated sheet steel, powder coated texture

LOAD RATING

1500 kg / FOR INSTALLING

- 19" components on the front and rear
- installation accessories

COLOR

- visible surface of covers, RAL 7032

SUPPLY SCHEDULE

- 1 basic rack
- 1 top cover, closed
- 1 rear panel with quick connectors or screw
- 2 side panels with quick connectors or screw
- 2 horizontal trim, front
- 4 levelling feet (0-25mm)

HOW SUPPLIED

- assembled or disassembled

SCREW CONSTRUCTION

- Dismantling the rack guarantees easy accessibility, even to the most restricted areas.

ALUMINIUM CONSTRUCTION

Proven technology based on aluminium extrusion offers high flexibility and stability with low weight. The T-slot system in the frame guarantees freely selectable arrangement of accessories.

With fixed 19" installation on the front and rear

Installation of chassis runners and 19" shelves possible

For components in acc. with IEC 297

DIMENSIONS: (in mm)

W : Width H : Height D : Depth

h : Installation height

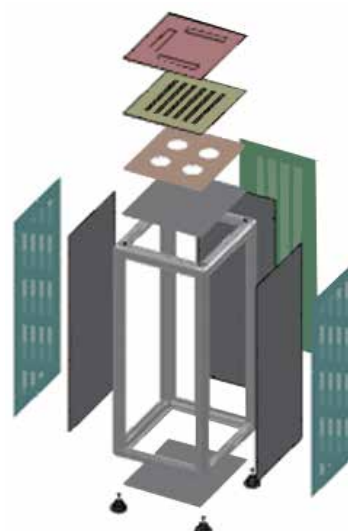
d : Useable depth

L : Length

HU : Standard height unit 1

HU = 44.45 mm

Kg : weight



HU	W	H	D	KG	ORDER NO.
11	585	635	635	29.5	HD116606
18	585	947	635	35.5	HD186610
24	585	1213	635	44	HD246612
32	585	1567	635	51.5	HD326615
11	585	635	685	31	HD116706
18	585	947	685	38.2	HD186710
24	585	1213	685	42	HD246712
32	585	1567	685	48	HD326715

IP RACKS (IP 55)

MATERIAL

- extruded aluminium
- corner piece, die cast aluminium
- covers, and trim extrusions, zinc-plated sheet steel, powder-coated texture
- multifunctional braces and 19" extrusions, sheet steel, zinc-plated

LOAD RATING

1500 kg / FOR INSTALLING

- 19" components on the front and rear
- installation accessories

COLOR

- visible surface of covers, RAL 7035 light grey

SUPPLY SCHEDULE

- 1 basic rack
- 4 19" sheet steel angular extrusions with mounting holes
- 2 multifunctional braces for cable clamping and universal mounting options
- 1 top cover, closed
- 2 side panels with quick connectors
- 2 vertical trim extrusions, front
- 1 rear panel with quick connectors
- 2 horizontal trim extrusions, front
- 4 levelling feet (0-25mm)

HOW SUPPLIED

- assembled or disassembled

SCREW CONSTRUCTION

Dismantling the rack guarantees easy accessibility, even to the most re-stricted areas.

ALUMINIUM CONSTRUCTION

Proven technology based on aluminium extrusion offers high flexibility and stability with low weight. The T-slot system in the frame guarantees freely selectable arrangement of accessories.

With fixed 19" installation on the front and rear

Installation of chassis runners and 19" shelves possible

For components in acc. with IEC





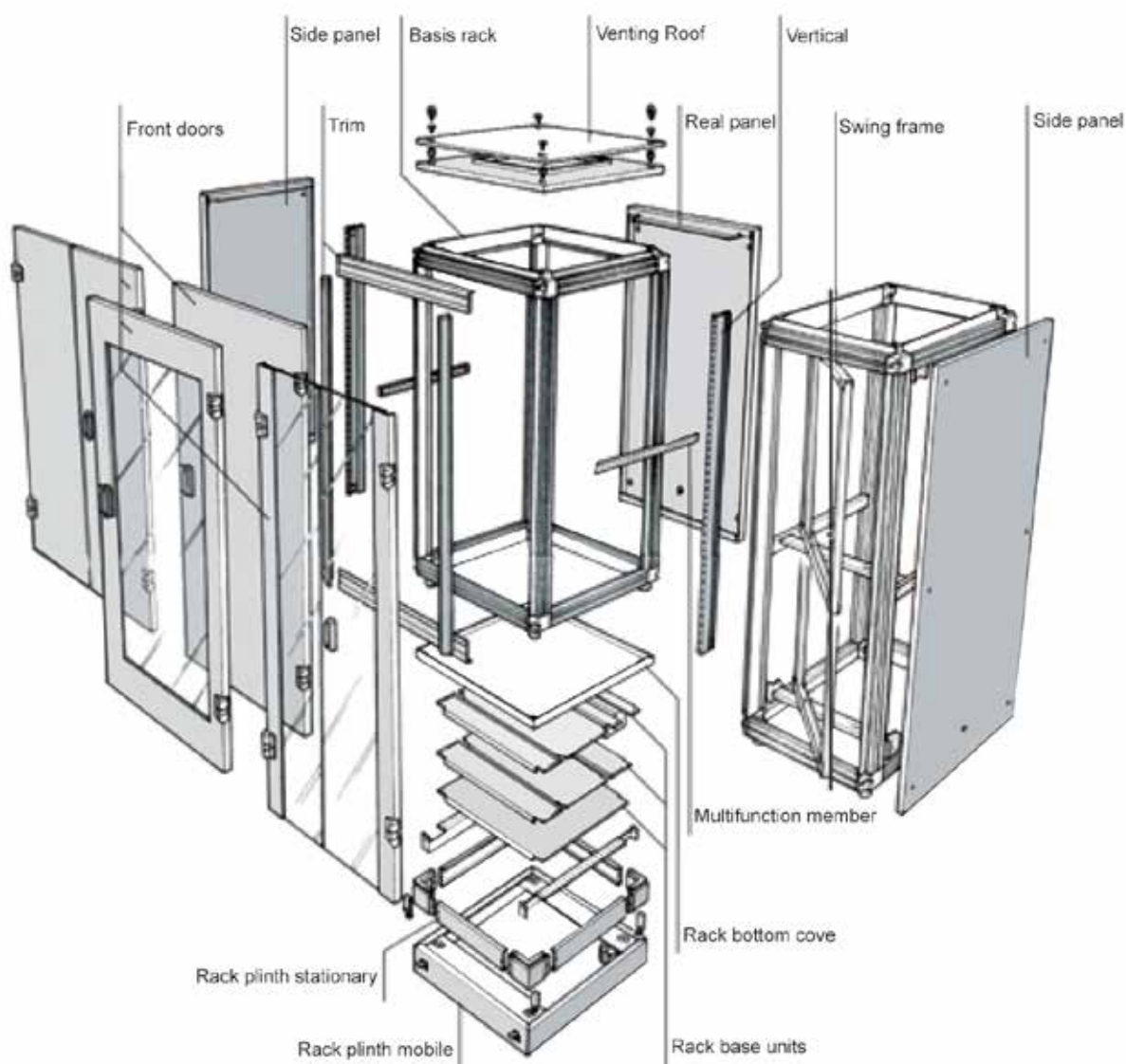
19" CABINETS

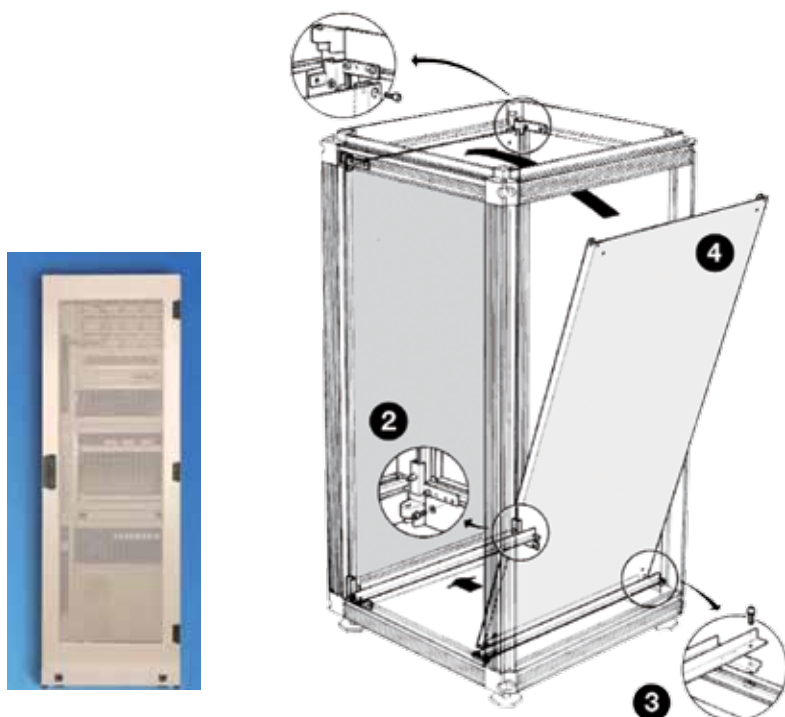
VAHAB Engineering Service

DIMENSIONS: (is mm)

W : Width H : Height D : Depth
 h : Installation height d : Useable depth L : Length
 HU : Standard heath unit 1
 HU : Standard heath unit 44.45 mm
 Kg : weight

HU	W	H	D	KG	ORDER NO.
23	600	1200	600	45	IP236612
37	600	1800	600	60	IP376618
41	600	2000	600	65	IP416620
46	600	2200	600	69	IP466622
23	600	1200	800	51	IP236812
37	600	1800	800	66	IP376818
41	600	2000	800	69	IP416820
46	600	2200	800	78	IP466822





AEG RACKS

LOAD RATING:

500 kg / FOR INSTALLING

- 19" components on the front and rear
- installation accessories

SUPPLY SCHEDULE :

- 1 basic rack
- 1 top cover, closed
- 1 rear panel with quick connectors or screw
- 2 side panels with quick connectors or screw
- 2 horizontal trim, front
- 4 levelling feet (0-25mm)

HOW SUPPLIED

- assembled or disassembled

SCREW CONSTRUCTION :

- Dismantling the rack guarantees easy accessibility, even to the most restricted areas.

ALUMINIUM CONSTRUCTION

Proven technology based on aluminium extrusion offers high flexibility and stability with low weight. The T-slot system in the frame guarantees freely selectable arrangement of accessories.

With fixed 19" installation on the front and rear





19" CABINETS

VAHAB Engineering Service

Installation of chassis runners and 19"shelves possible
For components in acc.with IEC 297

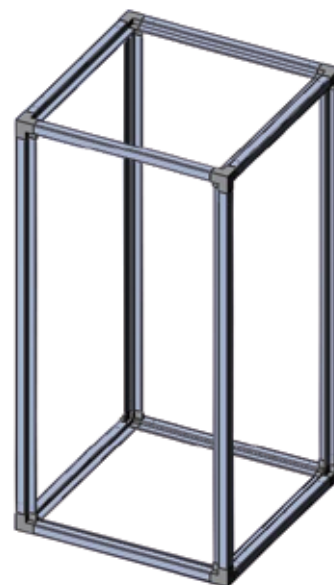
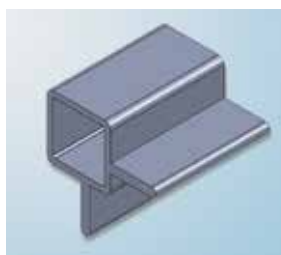
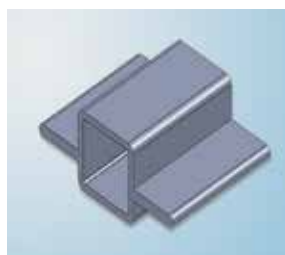
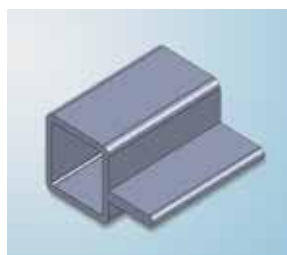
DIMENSIONS: (is mm)

W : Width H : Height D : Depth

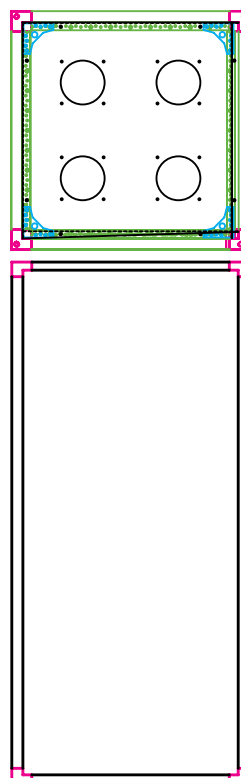
h : Installation height d : Useable depth L : Length

HU = Standard heath unit 1 HU= 44.45 mm

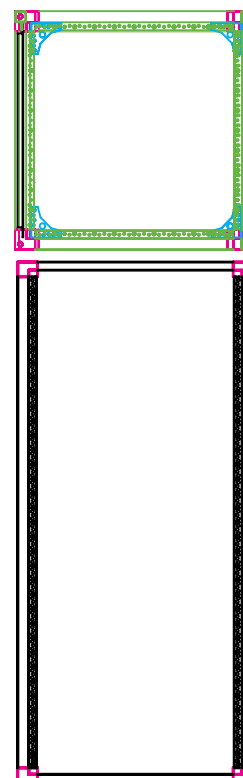
Kg : weight



HU	W	H	D	KG	ORDER NO.
23	600	1200	600	45	AE236612
37	600	1800	600	60	AE376618
41	600	2000	600	65	AE416620
46	600	2200	600	69	AE466622
23	600	1200	800	51	AE236812
37	600	1800	800	66	AE376818
41	600	2000	800	69	AE416820
46	600	2200	800	78	AE466822



TOP



OP RACKS

OP RACKS

- 19" universal hole pattern for front and side mounting of equipment
- Easy cable management through large cut outs in the frame and easy cable conducts by cable clamps mountable on all faces
- Base openings ready for individual positioning of the frame
- Base equipped with feet (standard) or castors (optional)
- Electrostatic powder coating (standard RAL 7032)
- Material: 2mm steel

Height (Unit)	Order NO
28	OP 28
42	OP 42



Unit 2, No 100, Between Azmayesh bridge and shahr ara, Jalal Al Ahmad Broadway, Tehran - Iran

Tel/Fax: +98 21 88484368 & +98 21 88245870

Mob : +98 912 2264817 , +98 912 1463667

www.vahab-case.com

E-mail: vghahramani@yahoo.com